

# SYRUS TITAN 4G

**PART NUMBER**  
**ST-4GM1**

The Syrus Titan 4G is a portable tracker featuring an SOS button, superior GPS performance, and 3-axis accelerometer. It is exclusively supported by the Pegasus Gateway IoT Platform for Fleet Automation with built-in global wireless connectivity. It works on LTE Cat M1 and NB-IoT FDD 1, FDD 3, FDD 8, FDD 20, FDD 28, and GPRS/EDGE 900/1800 with superior receiving sensitivity.

- 2600 mAh Battery  
Up to 20 days  
(in sleep mode)
- 3-axis accelerometer  
for Motion Alert with  
configurable thresholds
- LTE Cat M1 and NB-IoT  
GPRS 900/1800 bands

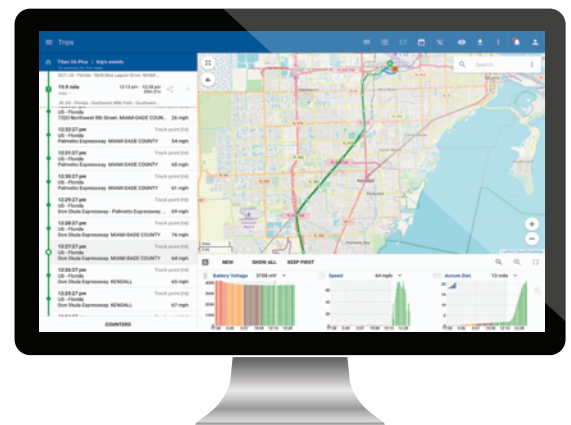


- Voltage monitoring  
& low battery  
notification
- Configure custom  
triggers & notifications  
via Pegasus Gateway
- LED indicator:  
Cellular, GPS, WiFi, and  
battery status

## LED INDICATION

LED	EVENT	STATE
	Power on and normal	Dark
	Fully charged	Solid
	Charging	Slow Flash
	Power key was pressed & prepare to power off	Solid
	Power key was pressed and prepare to power on	Solid
	Network has been registered	Slow Flash
	Power off	Dark
	Power key was pressed & prepare to power on	Solid
	GPS signal valid	Fast flash
	GPS turned off, GPS signal invalid	Dark
	Power key was pressed & prepare to power on	Solid

ONLY AVAILABLE ON  
**Pegasus**  
Gateway



# TECHNICAL SPECIFICATIONS

## INTEROPERABILITY

Pegasus Gateway	API, JSON Forwarders, Webhooks
-----------------	--------------------------------

## CELLULAR

Data Support	LTE CATM1/NB/2G
Packet Data	TCP/UDP/SMS
Operating Bands	(MHz) CATM1/NB B1(2100), B2(1900), B3(1800), B4(AWS1700), B5(850), B8(900), B12(700), B13(700), B18(800), B19(800), B20(800), B26(850), B28(700)
2G	B2(1900), B3(1800), B5(850), B8(900)

## BATTERY LIFE

Operating Voltage	3.7V internal battery pack
Ultra Low Power Sleep Mode	Yes
Battery	2600mAh Rechargeable Li-Polymer

## ENVIRONMENTAL

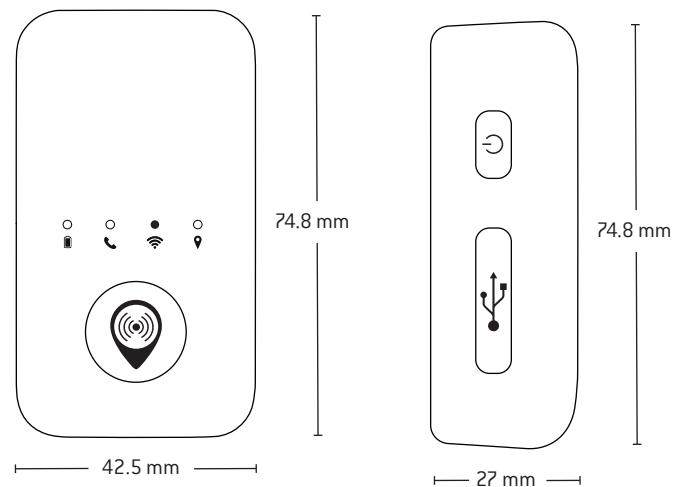
Operating Temperature	-20°C to 55°C
Storage Temperature	-40°C to 85°C
Humidity	95% RH @ 50°C non-condensing
RoHS Compliant	Yes

## PHYSICAL

Dimensions	74.8 x 42.5 x 27 (mm)
SIM	4FF
Weight	104g

## LOCATION TECHNOLOGY

GNSS	GPS & GLONASS
Location Accuracy	2.5 meter CEP (with SBAS)
TIFF (Open Sky)	
Cold Start	29s average
Hot Start	1s average



# SET UP CUSTOM ALERTS



# RECEIVE MULTIPLE NOTIFICATIONS

