

TIRE TEMPERATURE & PRESSURE  
MONITORING MADE EASY WITH SYRUS 3G &  
PEGASUS GATEWAY OPEN API PLATFORM.



## Temperature & Pressure

Real-time information including tire ID & axle position.



## Triggers & Notifications

Customize thresholds and get instant alerts.



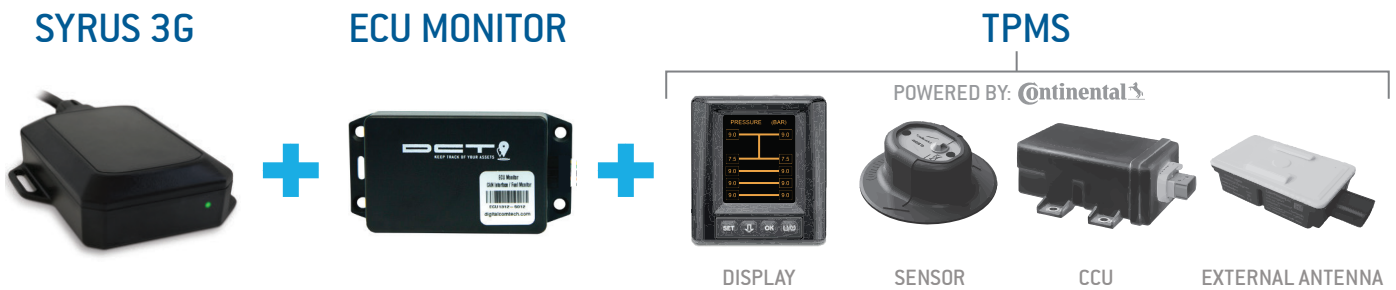
## Telematics Integration

Access all data using Pegasus open APIs for third-party platforms.

## REAL-TIME TIRE DATA MONITORING MADE EASY WITH SYRUS 3G AND PEGASUS GATEWAY OPEN API PLATFORM.

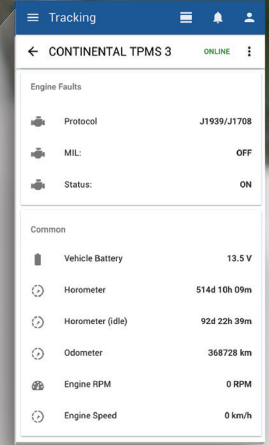
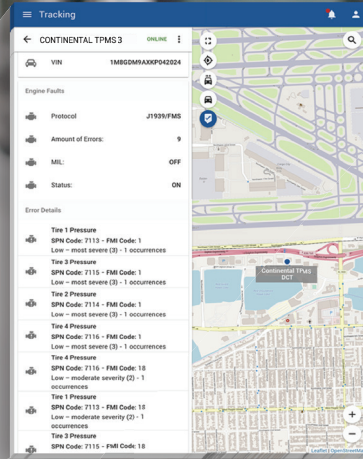
Using the Syrus 3G devices and ECU Monitor accessory connected to Continental's ContiPressureCheck™, Fleet Operators have full control to manage tire pressures and temperatures at all times.

Reduce the risk of failure while increasing mileage using Pegasus Gateway platform to control your fleet operation.



### TRIGGERS & NOTIFICATIONS





Lower fuel consumption, reduce risk of tire-related breakdowns, & extend tire life.

**Individual Tire-ID**

Tires	Temp	Press	ID	Error
4	30°C	108 PSI	5042382	
4	37°C	113 PSI	4F585E4	
4	36°C	108 PSI	5042390	
4	33°C	109 PSI	1049420P	
4	32°C	110 PSI	1049484	
5	32°C	108 PSI	1049881	
5	34°C	109 PSI	1049878	No data
5	7	0 PSI	1049878	No data
4	29°C	108 PSI	1049309	

**SPN Warning Codes Per Tire**  
RED COLOR WHEN PRESSURE OR TEMP IS LOW

**Real-time Updates**

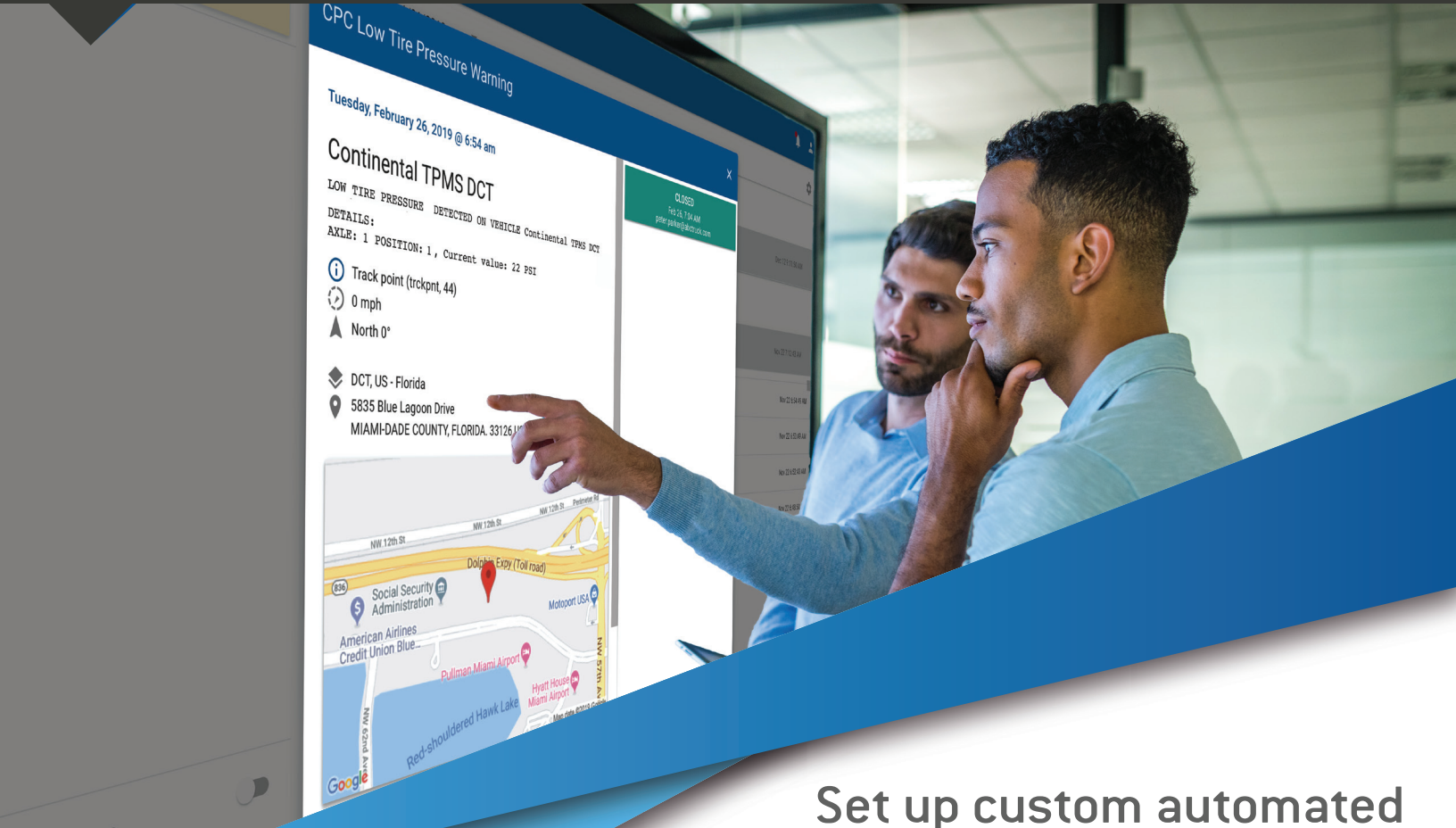
**Tire Pressure & Temperature**

Tires	Temp	Pressure
A1 P 1	31°C	113 PSI
A1 P 2	28°C	108 PSI
A2 P 6	24°C	108 PSI
A2 P 5	24°C	108 PSI
A2 P 3	27°C	107 PSI
A2 P 4	27°C	108 PSI
A3 P 10	27°C	108 PSI
A3 P 9	27°C	108 PSI
A3 P 8	27°C	108 PSI
A3 P 7	27°C	108 PSI

**Tracking Truck FM-363 ONLINE**

Engine	Value
Engine Oil Pressure	34 psi
Engine Oil Temperature	98 °C
Engine Oil Level	0 %
Advanced Pedal's throttle (accelerator)	0 %
Intake manifold temperature / temperature from engine air transfer tube	37 °C
Fluids Coolant Temperature	92 °C
Coolant Level	64 %





## Set up custom automated alerts based on your operation.

Use Pegasus Gateway Triggers to configure any alert from your fleet combining TPMS data together with over 250 parameters like engine data, geofencing, speeding, route information, and driver ID.

Attend alerts quickly and easily

Build alerts based on multiple conditions

Custom critical and warning alerts

Alert ID	Alert Description
SVL425 (0/14)	Tire sensor not detected. Possible theft.
ZAP769 (0/2)	Decreased Tire Pressure
TFU031 (0/3)	Starting Trip - Normal Tire Pressure
SVD846	Increased Tire Pressure





## View trip history data at your convenience.

Pegasus Gateway Platform records all data for the last 12 months of your fleet operation for easy trip analysis. Get custom charts on exact tire temperature & pressure vs variables including vehicle altitude, speed, ambient air temperature, fuel consumed, and/or any other parameter shown via the vehicle's engine control unit.





## Pegasus Gateway IoT Platform with open APIs for easy integration with third party solutions.

Seamlessly automate fleet operations by integrating vehicle data with any third party service provider and/or data visualization tool using RESTful API data. JSON fields for all tire pressure, temperature, and provisioning. Websocket integration for instant tire data monitoring. Learn more about [Pegasus API integrations](#) (developers.digitalcomtech.com).



Power BI

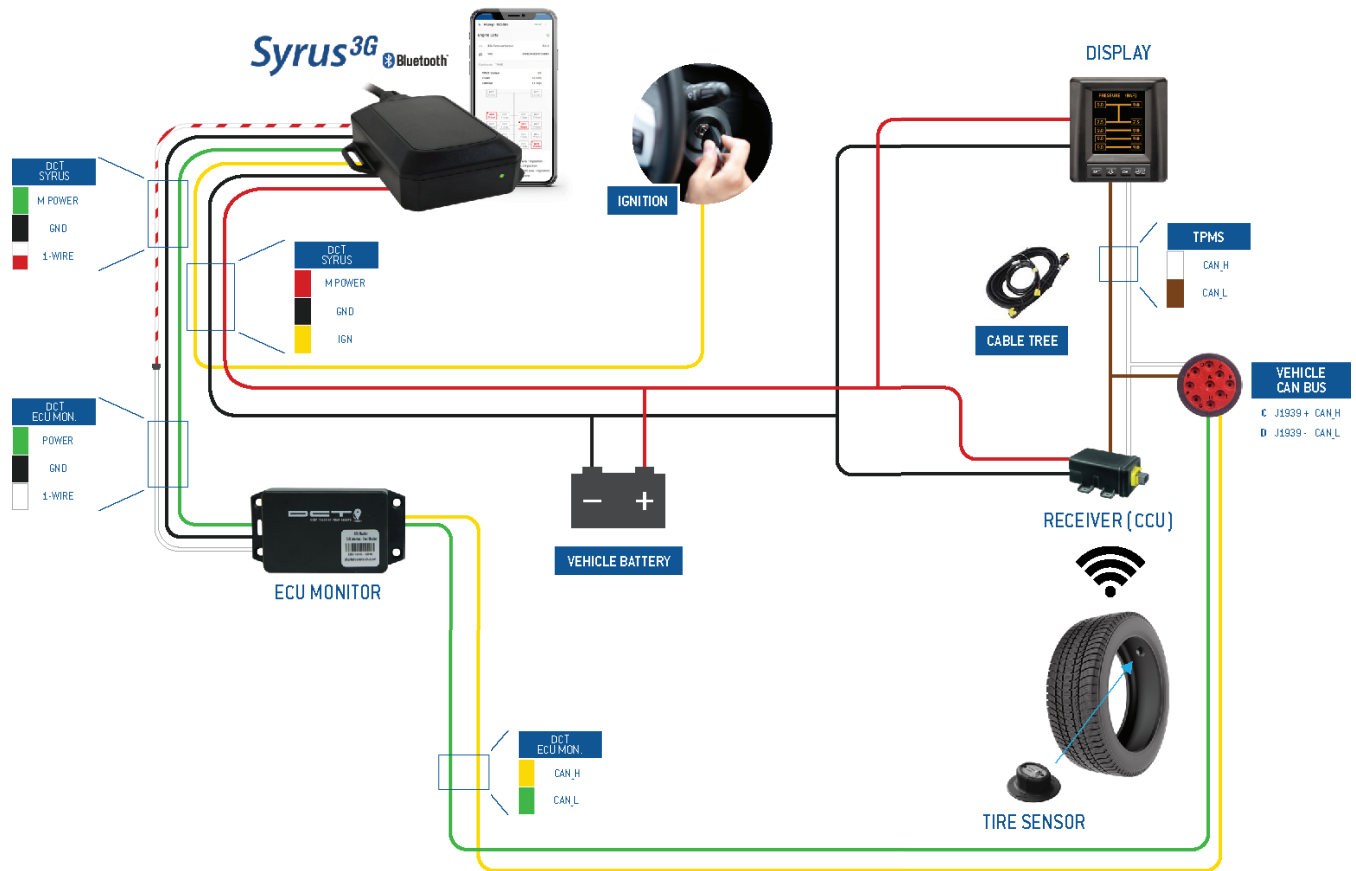


```
{  
  "event_wkday": 1.0,  
  "event_hour": 0.0,  
  "type": 10,  
  "vid": 1113,  
  "ecu_tires_psi":  
    "019119,018120,017115,016120,035116,0000125",  
  "head": 331,  
  "hdop": 0.8199999999999999,  
  "ecu_clutch_pedal": 0.0,  
  "ecu_trans_tmpr": 654.0,  
  "ecu_pto": 0.0,  
  "lid_position": tr
```

+ a b l e a u

## WIRING & INSTALLATION DIAGRAM

ContiPressureCheck™ by Continental is an easy-to-use and highly precise TPMS, designed to reduce tire costs, improve safety, and provide better tread life and fuel mileage. To learn more about this TPMS accessory please contact [Continental Tires](http://www.continental.com) [www.continental.com]. Tire device data that is captured via the ContiPressureCheck™ system is transmitted through the Syrus device + ECU Monitor accessory to the Pegasus Gateway Platform.



FOR ADDITIONAL INFORMATION VISIT OUR  
[ONLINE SUPPORT LIBRARY](http://SUPPORT.DIGITALCOMTECH.COM)

SUPPORT.DIGITALCOMTECH.COM

# *Pegasus*

*Gateway*



5835 Blue Lagoon Dr. #202 Miami, FL 33126

+1 305 688 8630

[www.mctec.mx](http://www.mctec.mx)