

SYRUS SIGFOX COMMUNICATOR

PART NUMBER
1101-24

The **Syrus Sigfox** is a radio communication accessory that enables Syrus GPS devices to communicate globally with the first OG global network. Plug & Connect compatible with Syrus GPS devices, easy to program and manage in the Pegasus Cloud Gateway - web application. It is the ideal solution for critical scenarios and activities that request reliable, near real time, communication services including backup for cellular networks.

RC2 and RC4 zone capability using the **Sigfox RF** network

RS-232 transparent communication with Syrus GPS device / compatible with Syrus three (3)-Port Serial Expander

Works with Syrus' Jamming detection capability to trigger an event



Fully programmable events using Syrus fixed signals

Fully integrated and compatible with Pegasus Gateway Ecosystem

High gain, low-profile, external Sigfox antenna
Antenna sold separately

ONLY AVAILABLE ON
Pegasus
Gateway



TECHNICAL SPECIFICATIONS

PHYSICAL

Unit Dimensions (inches)	4.335 x 2.246 x 1.063
Material	GRABS UL 94HB Plastic

ENVIRONMENTAL

Operating Temperature	-30°C to 85°C
Storage Temperature	-40°C to 85°C
Operating Humidity	Up to 75% non-condensing
Storage Humidity	Up to 93% non-condensing

ELECTRICAL

Operating Voltage	8 - 32VDC
Current Consumption	Idle: 25mA Tx/Rx: 80mA

NETWORK SPECS

Reference	SFM11R2D
Network	Sigfox-Zone RC2/RC4
Frequency Range	902.200 MHz - 920.800 MHz
Output Power	22.5 dBm

ANTENNA CHARACTERISTICS

Impedance	50 Ohm
Gain (max)	3.5 dBi
Polarization	Linear
VSWR (max operational)	≤1.9 typical
Connector	SMA
Dual-band	863–873MHz and 902–928MHz
Part Number	712-ANT-8/9-HDP2SMA

ADDITIONAL FEATURES

Over the air firmware upgrade	Yes
Sigfox message size 12 bytes	Yes
Polarization and transient voltage protection	Yes

MOUNTING

Screw Mount	Yes
-------------	-----

PINOUT

COLOR	CABLE	DESCRIPTION
■ GREEN	MAIN POWER (8-32V)	May be connected to the green cable in Syrus devices (in models 2481 or 2480) or directly to the vehicle's battery.
■ BLACK	GROUND (0V - GND)	
■ WHITE	RX	Connects to Syrus TX cable (brown).
■ BLUE	TX	Connects to Syrus RX cable (purple).

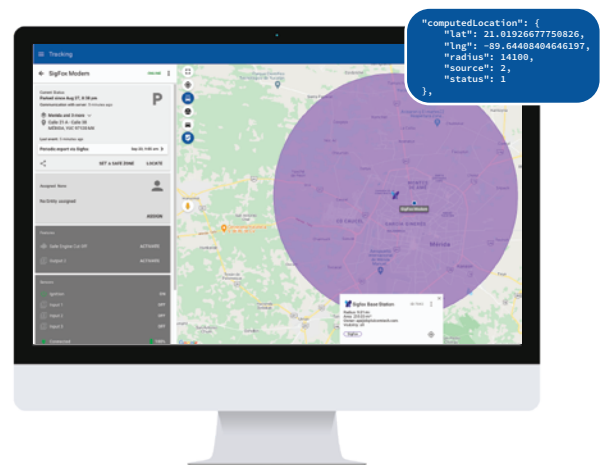
COVERAGE MAP

RC 2
Brazil, Canada, Mexico, Puerto Rico, USA.
RC 4
Latin America: Argentina, Chile, Colombia, Costa Rica, Ecuador, El Salvador, Guatemala, Honduras, Nicaragua, Panama, Peru, Trinidad & Tobago, Uruguay.
Asia Pacific: Australia, Hong Kong, Indonesia, Malaysia, New Zealand, Singapore, Taiwan, Thailand.

PEGASUS CONFIGURATION

COMMANDS	
Set up Destination Address 1 for Syrus Sigfox >SDA1;P16<	Enable the Syrus Sigfox Mode >SXABR19200< >SXASMM1<
Disable Syrus Sigfox Mode >SXABR115200< >SXASMM0<	

* For more information on the latest stable firmware versions, please visit our support website at support.digitalcomtech.com



The ideal solution to trigger jamming detection events.